

NL Organ and Cornea Donor Statistics/Initiatives

April 2010-March 2011



Newfoundland Organ Stats

Stats – April 1, 2010 – March 31, 2011

- 5 Multi-organ donors
- 18 organs retrieved and transplanted



Stats continued

- 2 intracranial hemorrhage, 3 trauma
- Number of organs per donor = 3.8
- Donor age range from 3 - 68 years
- Average age of donor = 30 years

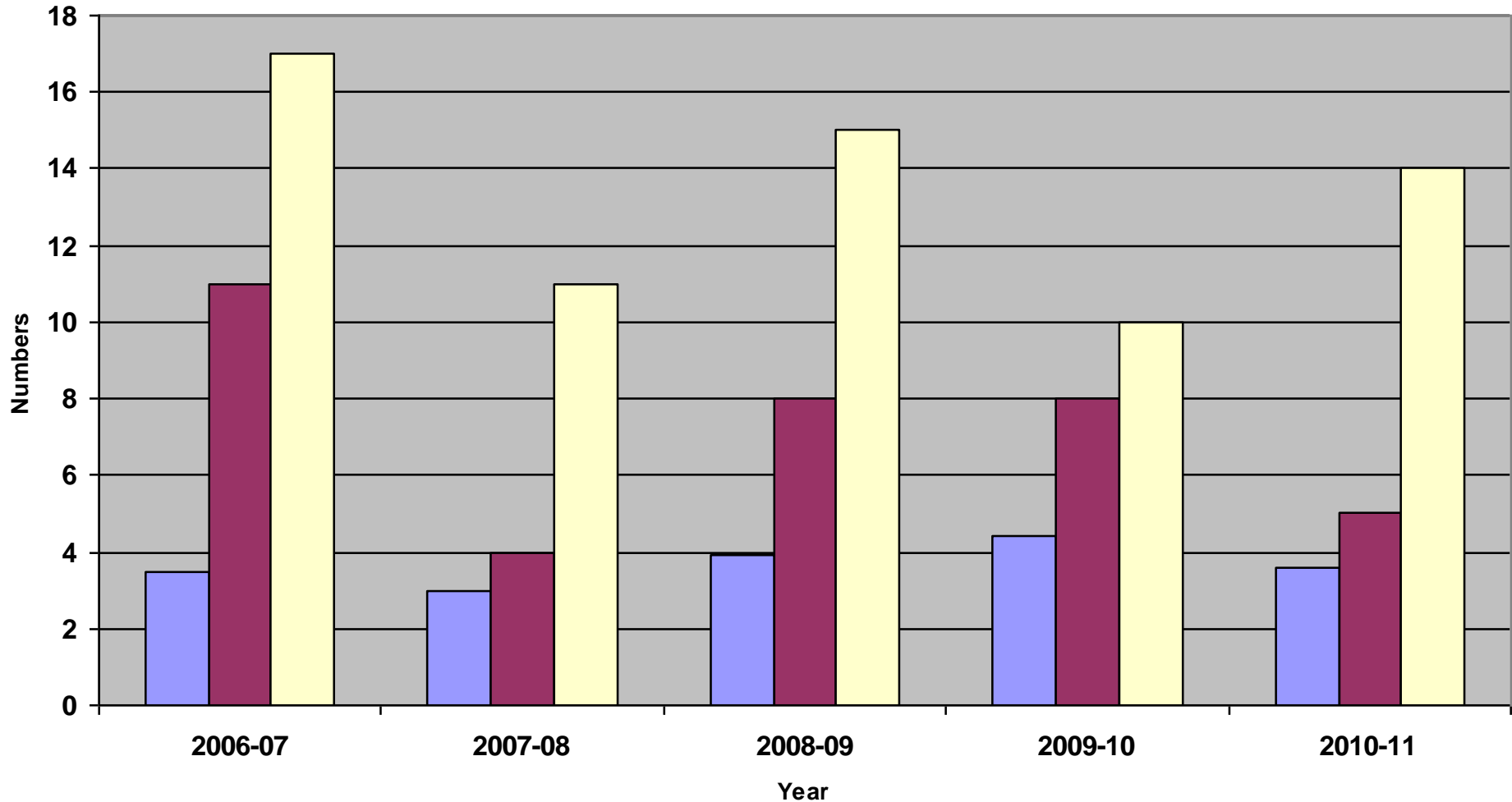


We're Doing Better

- **Stats - April 1 2011- September 1, 2011**
- 4 Multi –organ donors
- 15 organs retrieved and transplanted
- 6 cornea donors
- 12 corneas retrieved
- 10 corneas transplanted



NL Organ Donor Stats April 06- Mar 11



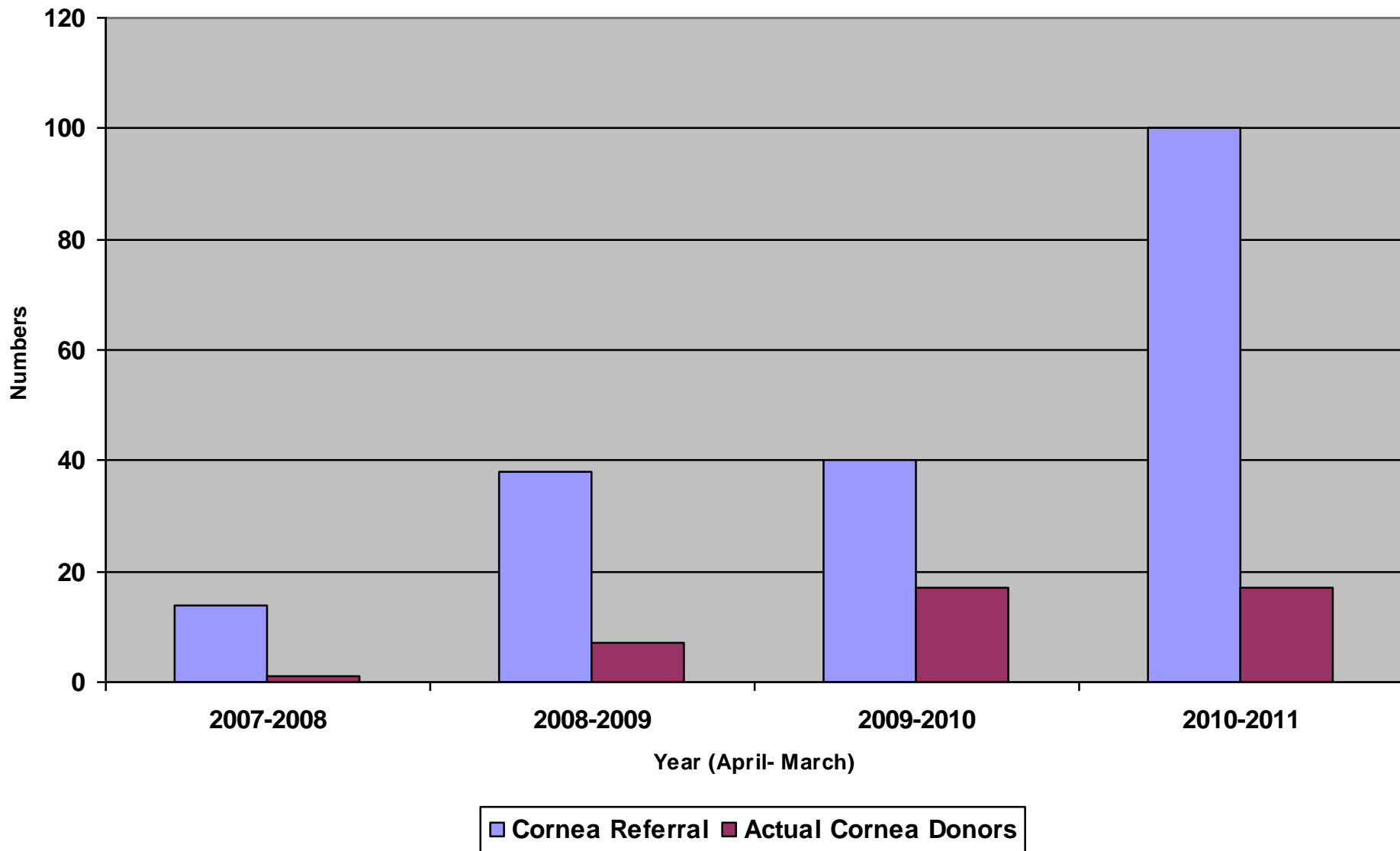
■ Average #Organs/donor ■ Organ Donors/Year ■ Referral of Eligible Organ Donors

Newfoundland Cornea Stats

- Referrals up from 40 in 2009 to 100 in last fiscal year
- 17 donors
- 34 corneas
- 70% transplanted (national average 50-60%)



NL Cornea Referrals verses Actual Cornea Donors



New Initiatives: Education, Education, Education

- Continuing Education shows direct correlation with increased referrals
- Presentation to Neurologists and Neurosurgeons
- Medical chart reviews show when education needs to be restarted
- Multiple education sessions completed with staff and frequent consultation with Clinical Educator and Area Manager.
- Attached cornea screening form to each death certificate in target areas = double referrals.



Fiscal Restraint

What to do to get the message out?

Webinars

- Professional education - Can reach all hospitals big and small
- Public Education – new ways to get the word out (allows presentations to smaller groups in remote areas)

Note: face to face allows more interaction, better attended, some areas limited by available technology



Future Initiatives

- Can't visit all high schools so...working with dept of education to develop curriculum based teaching module i.e. teach the teacher
- Introducing our pamphlet to funeral homes for prearranged funerals



Heart Valves Coming Back

- Final steps of re-establishing the heart valve retrieval program between OPEN & RTB

